

# BEAGLE BROS BULLETIN

Volume 1, Number 0

All the News That Fits

Summer/Fall 1988

## Dynamic Duo: AppleWorks™ and TimeOut™

Beagle Bros' TimeOut series of software transforms AppleWorks into a flexible and powerful program.

### READY-TO-GO CONVENIENCE

The nice thing about TimeOut is that it lets you use AppleWorks' Word Processor, Data Base and Spreadsheet like you always do. You won't notice anything different until you call up a TimeOut application (like the spelling checker or Thesaurus). When you're finished, it's back to work with AppleWorks without skipping a beat. With TimeOut, you never leave AppleWorks.

### UNTOUCHABLE SPEED

TimeOut's speed is amazing, even if we do say so ourselves. Our QuickSpell spelling checker, for example, is about 50 times faster than competing software on identical equipment.

And in case you're not familiar with AppleWorks itself, its text screen displays really fly, especially compared to every one of the graphics-based ("Macintosh style") programs that we've seen. Zip—you're at the top of a document. Zip—you're at the end. Screens are refreshed instantly after searches.

If you're new to AppleWorks, you're about to be spoiled by its speed. Add TimeOut and you'll be hooked for good.

### BEAGLE CLASSICS CLEARANCE SALE!

Beagle Bros is going to be having a half-price sale on Apple II software from the past, including many of our classic DOS 3.3 and ProDOS games, programming utilities, and graphics programs.

If you're on our mailing list, hang on until you receive our catalog this summer. Otherwise request a catalog using the coupon on page 3, or phone 619-452-5500.

Warning: Supplies of these software titles are definitely limited.



Beagle Bros programmers take a break from the keyboard.

## Q&A: APPLEWORKS+TIMEOUT

Here is a review of the TimeOut questions most often asked at trade shows, seminars and computer clubs:

**Q.** When I'm using AppleWorks, how do I access a TimeOut application?

**A.** Just hold down the ⌘ key and press Escape. To get back to AppleWorks, you usually just press Escape.

**Q.** What if I have several TimeOut applications—like Graph, DeskTools and Thesaurus?

**A.** When you press ⌘-Escape, a menu of available TimeOut applications will appear on the screen. Just move the cursor to the one you want.

**Q.** What do I do to add TimeOut's features to AppleWorks?

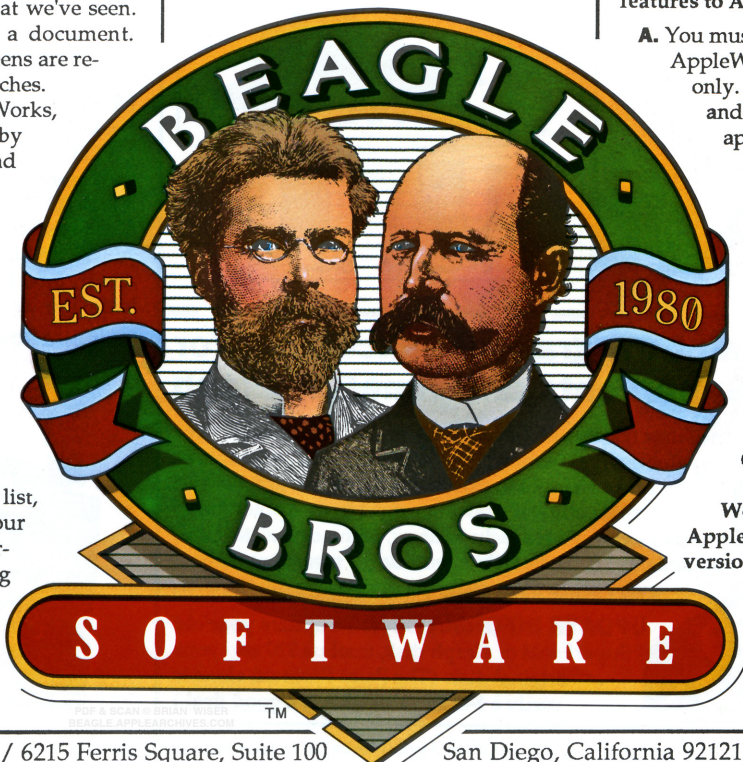
**A.** You must "update" your copy of the AppleWorks Startup disk—one time only. Just boot the TimeOut disk and follow the instructions that appear on the screen.

**Q.** Does TimeOut require an Apple IIGS and/or a bunch of extra memory?

**A.** No. All TimeOut applications work with any Apple IIGS, IIc or IIe (128K min.). In general, the more memory your Apple has, the faster TimeOut can do its thing.

**Q.** Your magazine ads say TimeOut requires AppleWorks "2.0 or later", but my AppleWorks displays a smaller version number on the opening title screen. What now?

**A.** Visit the store that sold you AppleWorks, or phone 1-800-544-8554 and ask for an update kit.




## TIMEOUT SUPERFONTS

Include graphics and "Mac quality" fonts in your AppleWorks printouts.

TIMEOUT SUPERFONTS lets you use AppleWorks to produce Macintosh-quality Word Processor output. You can mix type sizes and styles and include graphics in your printouts.

SuperFonts' screen-preview feature lets you see formatted type and graphics on the screen before printing. To make corrections, a keypress gets you back to the normal AppleWorks editing screen.

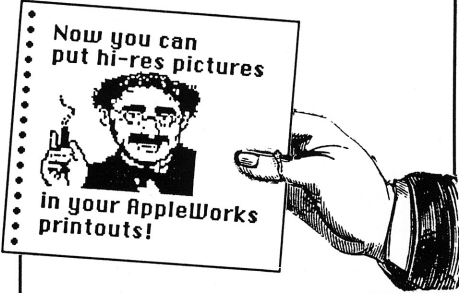
Chicago is a SuperFonts typestyle.  
 Courier is a SuperFonts typestyle.  
 Los Angeles is a SuperFonts typestyle.  
 Athens is a SuperFonts typestyle.  
 Helvetica is a SuperFonts typestyle.  
 London is a SuperFonts typestyle.  
 San Francisco is another one.  
 SuperFonts has picture fonts too:



- Includes 47 Macintosh quality fonts in sizes 9-24 point. Print in sizes up to 127 point (about 1 1/2" high).
- Use any combination of styles (**bold**, *italic*, **OUTLINE**, etc.) with any font.
- Optional high-quality mode (slower, darker) and 50% reduction mode.
- Supports AppleWorks' ⌘-O options.
- Works with hi-res and double hi-res graphics (PRINT SHOP™ pictures too, after simple conversion to hi-res).
- Compatible with ImageWriter, Epson and almost all dot matrix printers.

TIMEOUT SUPERFONTS..... \$69.95\*

Now you can put hi-res pictures in your AppleWorks printouts!



## TIMEOUT GRAPH

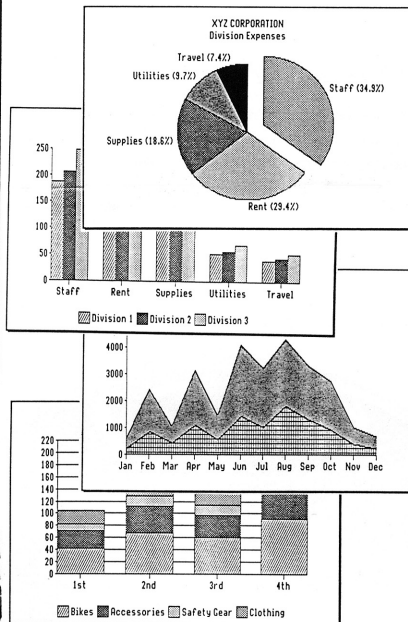
Convert AppleWorks Spreadsheet data into Informative graphs.

TIMEOUT GRAPH will turn your Spreadsheet data into classy looking graphs in practically no time. Just press ⌘-Escape while working with an AppleWorks Spreadsheet, choose a graph style (line, bar, pie, etc.), and see your graph on the screen in seconds. Printing on paper is just as easy.

TimeOut Graph's speed makes it easy to experiment with different graph styles before you print.

- Nine graph styles: Bar, Stacked Bar, Line, Pie, Exploded Pie, XY (scatter), Area, Hi-Lo and Point.
- Automatic or manual axis scaling.
- Flexible graph titles and labeling.
- Selectable symbols and fill patterns.
- Save graphs on disk for use in presentations and in other programs.

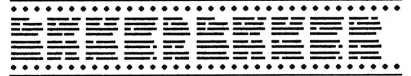
TIMEOUT GRAPH..... \$89.95\*



## TIMEOUT SIDESPREAD

Print sideways Spreadsheets from inside AppleWorks.

TIMEOUT SIDESPREAD solves the problem of making those long horizontal AppleWorks Spreadsheet printouts fit on vertical printer paper. Just press ⌘-Escape while you're working with a Spreadsheet and highlight the area you want printed.



- No limit on Spreadsheet size.
- Print all or part of a file.
- Many fonts and font sizes.
- Optional high quality mode (slower, darker) and 50% reduction mode.
- Works with ImageWriter, Epson and almost all other dot matrix printers.

TIMEOUT SIDESPREAD..... \$49.95\*

## TIMEOUT POWERPACK

NEW

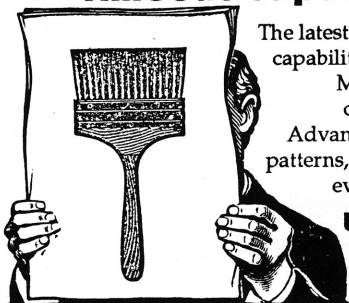
Here are ten new applications that add still more power to AppleWorks.

- LINE SORTER: Alphabetizes AppleWorks Word Processor lists.
- TRIPLE DESKTOP: Allows up to 36 files on the Desktop (instead of 12).
- TRIPLE CLIPBOARD: Creates three independent Clipboards.
- PROGRAM SELECTOR: Launches System or BASIC programs. When you exit, AppleWorks is automatically re-run.
- HELP SCREENS: Creates screens that can be accessed from AppleWorks.
- FILE LIBRARIAN: Reads the current directory into a Data Base file.
- DESKTOP SORTER: Alphabetizes the Desktop index, or arranges in any order.
- CATEGORY SEARCH: Speeds up Data Base searches. Includes wild cards too.
- AWP TO TXT: Saves files as "true" text files without unwanted carriage returns.
- ASCII VALUES: Converts numbers to ASCII, hex, binary and screen equivalents. Handy for exotic macros.

TIMEOUT POWERPACK..... \$49.95\*



## NEW! Paint Program enhancement for TimeOut SuperFonts and TimeOut Graph



The latest releases of TimeOut SuperFonts and Graph have capabilities for creating hi-res and double hi-res graphics. Make changes to existing pictures and graphs—and create original drawings—right from AppleWorks! Advanced features include draw, paint, circles, text, fill, patterns, cut & paste, fatbits, pull-down menus, and about every other paint program option you can think of.

**UPDATE INFORMATION:** To update your old SuperFonts or Graph disk, mail us \$20 and your original disk. (The Paint Program alone is easily a \$49.95 value—this is a good deal.)

## TIMEOUT DESKTOOLS

Access these classic accessories from Inside AppleWorks

TIMEOUT DESKTOOLS adds all kinds of goodies to AppleWorks. Take a look:

- **CALCULATOR:** Features an on-screen tape printout, editable before printing.
- **CALENDAR:** Appointment scheduler and priority task list for 1910 to 1999.
- **CLIPBOARD CONVERTER:** Converts Clipboard data from Data Base to Spreadsheet and back.
- **DIALER:** Lets you dial phone numbers from anywhere in AppleWorks.
- **FILE ENCRYPTER:** Disguises private files so only you can read them.
- **NOTEPAD:** A place to write those thoughts right now, before you forget.
- **PAGE PREVIEW:** See your Word Processor layouts before they print.
- **PUZZLE:** It's the old classic "15 Game" played from within AppleWorks!
- **WORD COUNT:** Reports how many words and characters are in a file.
- **AND:** Envelope addresser, pop-up date+clock, caps/lowercase converter.

**TIMEOUT DESKTOOLS..... \$49.95\***

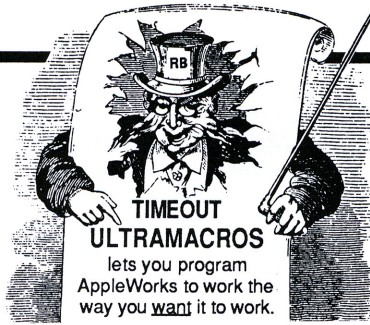
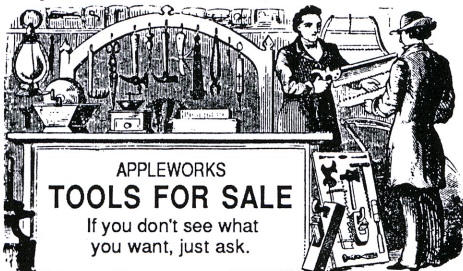
## TIMEOUT DESKTOOLS II

**NEW**

More accessories to make life with AppleWorks a little easier

- **AREA CODE FINDER:** Search major cities by city, state or area code.
- **CALCULATOR-PLUS:** A powerful scientific and financial calculator.
- **CONVERTER-PLUS:** At-your-finger-tips equivalents for metric/decimal, length, weight, liquid, time, etc.
- **DIRECTREE:** Load AppleWorks files without setting pathnames.
- **PRINTER MANAGER:** Send control codes to printer for maximum control.
- **SCREEN PRINTER:** Prints any section of the screen on your G-H printer.
- **STOP WATCH:** Times up to 5 events. Keep track of time for billing, etc.
- **UTILITIES:** Reads new TimeOut disks into easy-access multiple menus.
- **PLUS:** Edit/view Clipboard, search files, test disks, auto-blank screen...

**TIMEOUT DESKTOOLS II ..... \$49.95\***



## TIMEOUT ULTRAMACROS

One AppleWorks keystroke can be worth a thousand words.

TIMEOUT ULTRAMACROS is a big time-saver. It can memorize any sequence of AppleWorks keystrokes and "play them back" for you at the touch of a key.

Ultra's built-in macros are ready to use. Create your own custom macros too. For example, make ⌘-N type and format your name and address. Or make ⌘-1 automatically update and arrange a spreadsheet column.

Add optional MOUSE CONTROL to AppleWorks too, to speed up cursor positioning and block highlighting.

- Speedy compiler supports 50+ macro commands, including IF-THEN-ELSE.
- Macros can read screen characters, and even PEEK and POKE memory.
- Macros can access any AppleWorks file or TimeOut application.
- Macros can wake you up or do routine tasks at a preset time.
- An optional screen-saver feature blanks the screen if a key hasn't been pressed for a period of time.
- Task Files can be launched from within AppleWorks and BASIC.

**TIMEOUT ULTRAMACROS..... \$59.95\***

## TIMEOUT MACROTOOLS

**NEW**

We've been collecting macros and here's a whole diskfull.

TIMEOUT MACROTOOLS is a double-sided disk with five new TimeOut applications and tons of macros from UltraMacro users around the world. Here are a few examples:

- Use macros to eject 3 1/2" disks.
- Use QuickSpell in a Data Base.
- Slide text to the next tab setting.
- Use decimal tab settings.
- Search for values and formulas in your AppleWorks Spreadsheets.
- Handy tips include ways to simulate for/next loops with macros, how to trap specific keys during user input, and a list of AppleWorks addresses that can be peeked and poked.
- We'd list more but we just ran out of room.

**TIMEOUT MACROTOOLS..... \$25.00\***  
(requires TimeOut UltraMacros)

## ORDER FORM

Purchase Beagle Bros products at your local software store. Or buy directly from Beagle. Use this order form or give us a call Monday-Friday, 9 am-5 pm Pacific time:



**1-800-345-1750**

From California: **1-800-992-4022**

The above numbers are for orders only. For questions about products: **619-452-5500**. For technical questions: **619-452-5502**.

Please check method of payment:



- Visa  
 MasterCard



- Check  
 Money Order  
 COD

Please add for shipping, First Class Mail, United States and Canada:

- 1-2 items: \$3.50
- 3-5 items: \$5.50
- 6+ items: \$7.50

COD, add \$3.00 additional (UPS, U.S. only)

(Outside U.S. we require a MasterCard or Visa number or a U.S. money order or a check from a New York bank in U.S. currency.)

Name.....

Address.....

City.....

State and Zip.....

Visa or MasterCard Number

Expiration Date.....

Signature .....

### BEAGLE BROS TIMEOUT SOFTWARE

- TimeOut DESKTOOLS ..... \$49.95
- TimeOut DESKTOOLS II ..... **NEW** 49.95
- TimeOut FILEMASTER ..... 49.95
- TimeOut GRAPH ..... 89.95
- TimeOut MACROTOOLS ..... **NEW** 25.00
- TimeOut POWERPACK ..... **NEW** 49.95
- TimeOut QUICKSPELL ..... 69.95
- TimeOut SIDESPREAD ..... 49.95
- TimeOut SUPERFONTS ..... 69.95
- TimeOut THESAURUS ..... **NEW** 49.95
- TimeOut ULTRAMACROS ..... 59.95

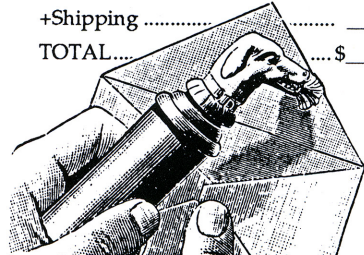
All-Products Catalog..... Free

Sub Total ..... \$ \_\_\_\_\_

+6 1/2% if California ..... \_\_\_\_\_

+Shipping ..... \_\_\_\_\_

TOTAL..... \$ \_\_\_\_\_



Mail orders to **BEAGLE BROS, Suite 100**  
**6215 Ferris Square, San Diego, CA 92121**

“Beagle Bros' TimeOut series puts every enhancement you could dream of right inside AppleWorks.”

—Paul Statt, InCider

“It is rare a program impresses me as much as the TimeOut series. After installing the programs and seeing the speed, all I could say was WOW. As far as I am concerned, if you use AppleWorks you need TimeOut. Period!”

—Jay Wilbur, Uptime

“TimeOut DeskTools does its work at blinding speed... the breadth and quality of this opening salvo in the AppleWorks enhancement wars bodes well.”

—Charles Rubln, A+

“TimeOut Graph works seamlessly; if you didn't know better, you'd swear it was part of AppleWorks... I'm very impressed with TimeOut.”

—Owen Linzmayer, Nibble

“I personally find this series very exciting... The entire series of programs belongs inside of every serious AppleWorks user's repertoire!”

—Marc Apfelstadt, Call-APPLE

“TimeOut UltraMacros is incredible. TimeOut QuickSpell is a work of true genius... I love this program.”

—Tom Welshaar, Open-Apple

“TimeOut 'fits' AppleWorks like a glove and in no time you get the feeling that it 'belongs' with AppleWorks... TimeOut SideSpread is terrific... TimeOut FileMaster is indispensable.”

—Ib ThorsteInsson, Robert Grist and Lorne Walton, Apples B.C. News



## TIMEOUT QUICKSPELL

Catch those spelling errors in record time, from inside AppleWorks.

TIMEOUT QUICKSPELL proofreads your AppleWorks Word Processor documents for misspelled words, and it does it FAST. For example, QuickSpell checks an average full page single-spaced letter about **50 TIMES FASTER** than the nearest competition (we're being very careful not to pinpoint any names here).

To use QuickSpell, simply press ⌘-Escape while your document is on the screen. You will be presented with a list of all the words not recognized by QuickSpell's 80,000 word Random House™ dictionary. You are then given the choice of correcting the spelling (suggested spellings appear on the screen) or adding the "unknown" word to the dictionary for future use.

QuickSpell also automatically finds double words, a very common word word processor error.

TIMEOUT QUICKSPELL ..... \$69.95\*

## TIMEOUT THESAURUS

NEW

Let's see now...

What's another word for synonym?

TIMEOUT THESAURUS makes synonym finding a snap. Operation is simple and fast. Place the cursor anywhere on the word you want a replacement for, press ⌘-Escape and you will be presented with a list of synonyms for that word listed by parts of speech—noun, verb, etc. If you see a synonym that you like, move the cursor to it and your original word will be replaced in context.

Best of all, everything happens from inside AppleWorks!

TIMEOUT THESAURUS ..... \$49.95\*

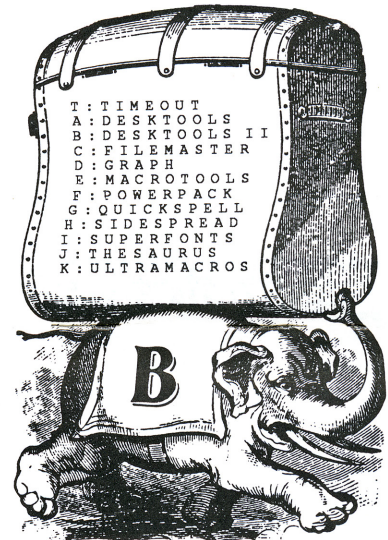
## TIMEOUT FILEMASTER

Total control over ProDOS disks and files without leaving AppleWorks

TIMEOUT FILEMASTER lets you perform all kinds of disk and file operations:

- Disk operations: Copy, compare, rename, format and erase (in 2 seconds).
- File operations: Copy, compare, rename, delete, lock and unlock. Create and copy subdirectories too.
- Copy 5 1/4" or 3 1/2" disks in one pass (with adequate memory) and make multiple copies from one master.
- Copy only files that have been changed since the last backup.
- Quickly load or make a backup of any size RAM disk.

TIMEOUT FILEMASTER ..... \$49.95\*



## TimeOut Authors

Alan Bird (T, G, J), Howard Bangerter (A), Randy Brandt (B, C, E, F, K), Glenn Clawson (A, B), Mark de Jong (A), Rob Renstrom (D), Mark Simonsen (H, I), Dan Verkade (A, B)

\*Includes both 5 1/4" and 3 1/2" disks. Requires AppleWorks 2.0 or later with an Apple IIGS, IIC or IIE (128K min.)



BEAGLE BROS, INC.  
6215 Ferris Square, Suite 100  
San Diego, California 92121

The Beagle Bros Bulletin is a supplement to our full Apple II software catalog, which may be obtained by writing to the above address or by phoning 619-452-5500.

AppleWorks is a registered trademark of Claris Corp.  
Apple is a registered trade mark of You-Know-Who.